

# **PHEEN THE EXHIBITION MENA ON**





### AVAILABILITY

3-6 MONTHS

### SIZE

5,000 - 10,000  
SQFT\*

\*SCALABLE WITH ADD  
ON PACKAGES  
AVAILABLE

### COST

\$45,000 USD PER  
MONTH

(\$135,000 MINIMUM)

### TARGET AUDIENCE

FAMILIES AND  
CHILDREN

### INSTALL 6 - 8 DAYS

DEINSTALLATION  
4 - 5 DAYS

### SHIPPING

3 X 53' TRAILERS



## WHAT YOU SEE ISN'T ALWAYS WHAT'S REAL

**Phenomena: The Exhibition** takes visitors on an immersive, interactive adventure into the science of illusions. Through hands-on exhibits and jaw-dropping experiences, audiences will question their own senses, uncovering how their minds interpret reality—and how easily they can be deceived.

# STEP INTO THE ILLUSION





# A MUST-SEE FOR MUSEUMS, SCIENCE CENTERS

## HIGH-IMPACT, INTERACTIVE EXPERIENCES

Mirror mazes, zero-gravity rooms, and mind-bending optical illusions create an unforgettable guest experience.

## ENGAGING FOR ALL AGES

Kids and adults alike will be captivated by the perfect mix of science, fun, and surprise.

## TURNKEY & ACCESSIBLE

A fully designed, ready-to-install exhibition with ADA-accessible features and bilingual options.



**DEFY  
YOUR  
REALITY**

# KEY ATTRACTIONS THAT DRAW CROWDS

## MIRROR MAZE

Lose yourself in an infinite world of reflections.

## ROTATING VORTEX

Can you keep your balance in this physics-defying tunnel?

## AMES ROOM

Experience the mind-warping magic of perspective.

## MAGIC TABLE

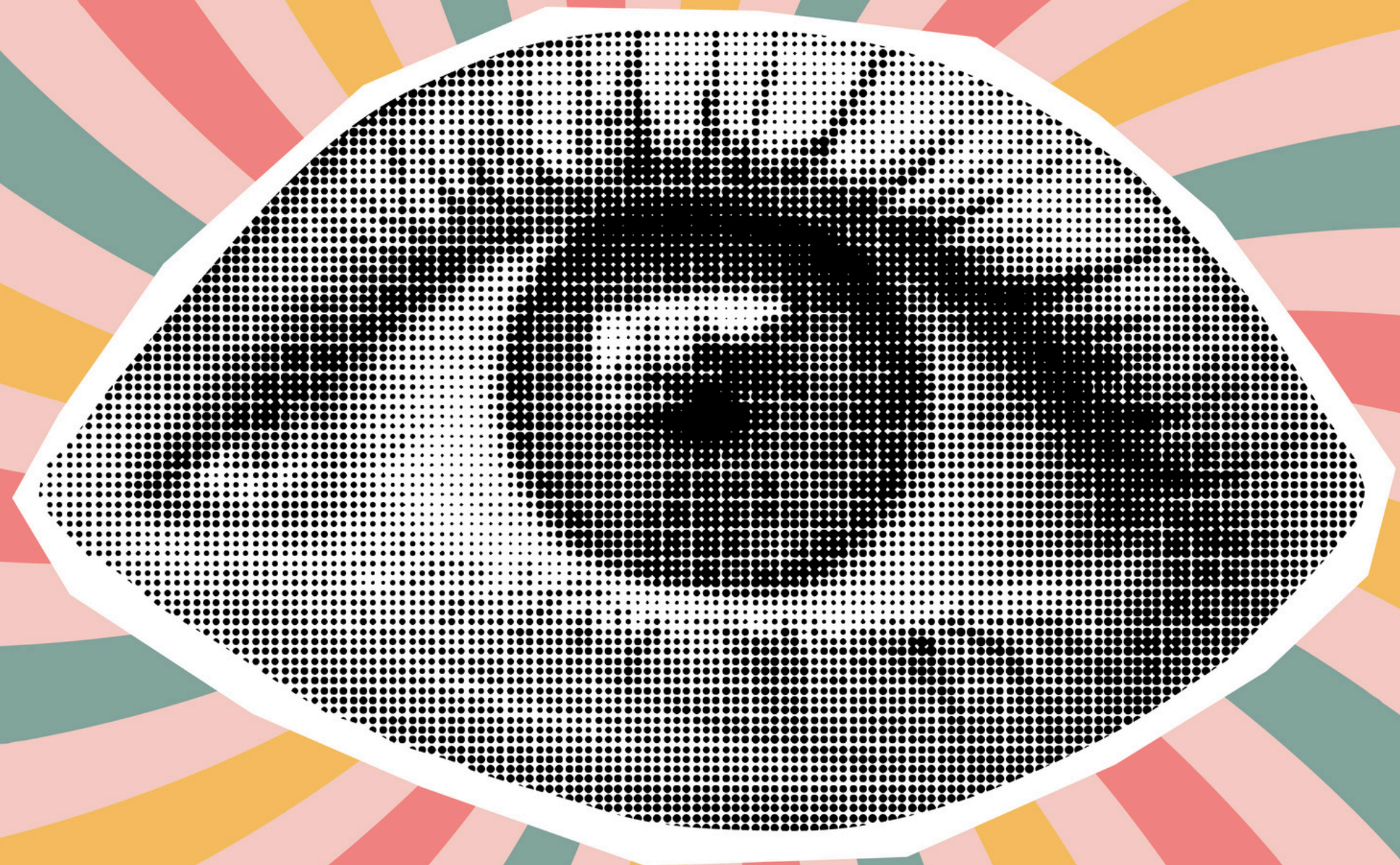
A disembodied head? See it to believe it!

## VR & PROJECTION EXPERIENCES

*(Add-On Package)*

A high-tech journey into illusion.

o



# UNCOVER AND DISCOVER





# **DRIVE ATTENDANCE SPARK CURIOSITY AND CREATE BUZZ**

Bring Phenomena to your venue and give visitors an experience that will leave them talking—and coming back for more.

Booking Now for Limited Tour Slots

## **CONTACT:**

DALA PROJECTS

HELLO@DALAPROJECTS.COM

WWW.DALAPROJECTS.COM/PHENOMENA

